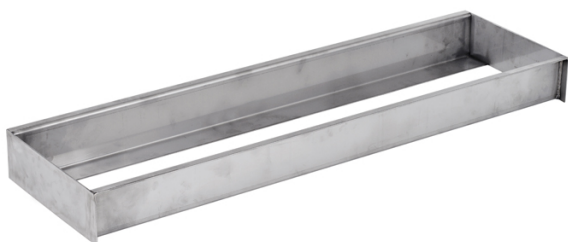
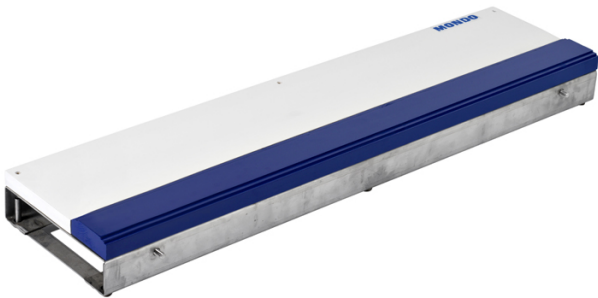




Stainless Steel Take-Off System

ATK01

Kit consisting of Take-Off Board, Blanking Lid, Foundation Tray,



Stainless Steel Take-Off Board (AT010)

Designed and manufactured in accordance with, and certified under, the Regulations of the International Federation (IAAF Certificate E-99-0181).

It consists of a metal structure, made from stainless steel sheet, which supports both the plasticine insert and the take-off board. The latter, made of lacquered solid pine wood, is firmly bolted to the metal structure. The plasticine insert is fabricated out of solid pine wood, 10 cm wide, in full accordance with the Regulations of the International Federation.

This metal structure, with standardized dimensions, perfectly fits the foundation tray and is equipped with stainless steel vertical adjustment bolts to level the take-off board, and with horizontal ones to secure it to the foundation tray, once levelled, preventing it from moving during use.

All bolts are accessible from the top of the board; so both levelling and securing operations can be carried out without removing the take-off board from the foundation tray.

Stainless Steel Blanking Lid (AT020)

The blanking lid consists of a metal structure designed to accept the synthetic floor. It is made of stainless steel sheet.

This metal structure, with standardized dimensions, perfectly fits the foundation tray and is equipped with stainless steel vertical adjustment bolts to level the lid, and with horizontal ones to secure it to the foundation tray, once levelled, preventing it from moving during use.

All bolts are accessible from the top of the lid; so both levelling and securing operations can be carried out without removing the lid from the foundation tray.

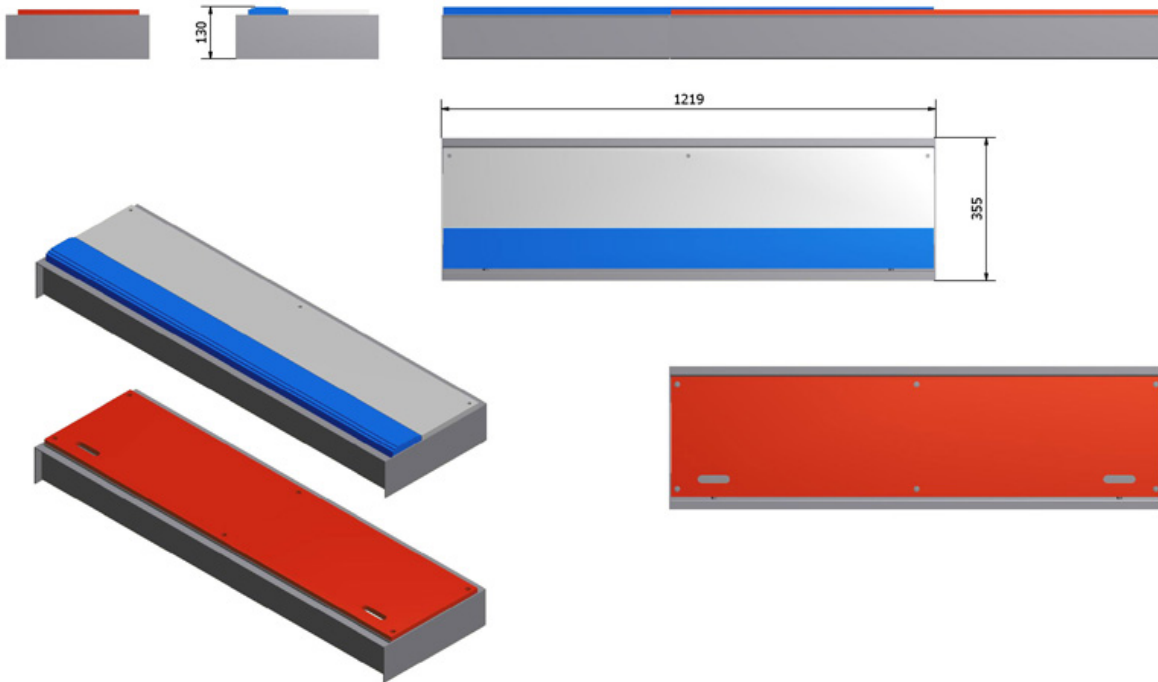
Stainless Steel Foundation Tray (AT001)

The foundation tray consists of a metal structure designed to house the off board or the blanking lid.

It is made of 3 mm thick stainless steel sheet.

WEIGHT

DIMENSIONS



COMPLEMENTS

Complements for: **Stainless Steel Take-Off System ATK01**

Plasticine AT240

ACCESSORIES

Accessories for: **Stainless Steel Take-Off System ATK01**

Warm-up Foul Board AT015

SPARE PARTS

Spare Parts for: **Stainless Steel Take-Off System ATK01**

Plasticine insert AT011